



# User Manual



## Wireless Activity Tracker



Product Info



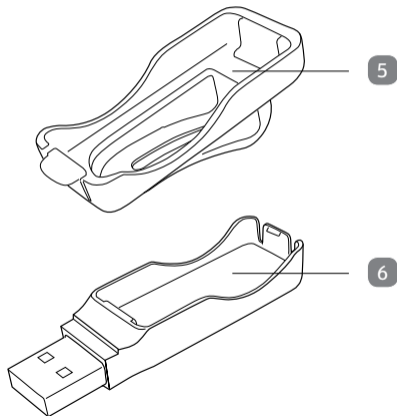
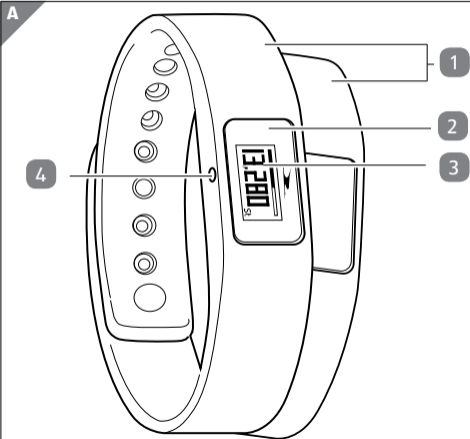
[www.aldi.co.uk](http://www.aldi.co.uk)

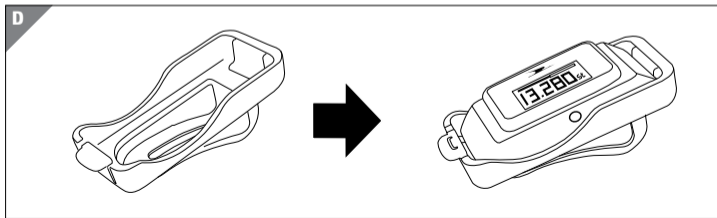
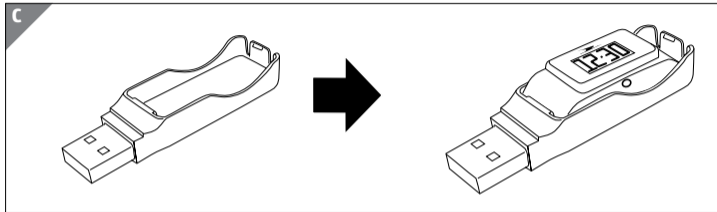
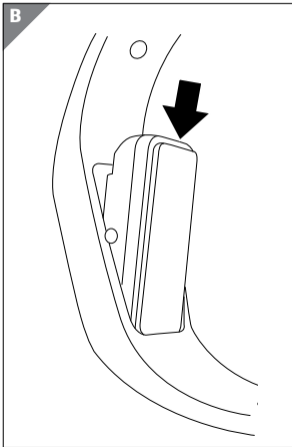
+ VIDEO

# Contents

<b>Overview</b> .....	<b>4</b>	Calorie mode .....	26
<b>Use</b> .....	<b>5</b>	Activity time mode.....	27
<b>Scope of delivery/device parts</b> .....	<b>6</b>	Sleep mode .....	27
<b>QR code</b> .....	<b>7</b>	Alarm function .....	28
<b>General information</b> .....	<b>9</b>	Compatible Bluetooth® devices .....	29
Reading and storing the instruction manual....	9	Watertightness.....	30
Explanation of symbols .....	10	<b>Operation</b> .....	<b>32</b>
<b>Safety</b> .....	<b>13</b>	Charging the rechargeable battery .....	32
Proper use .....	13	Inserting the display module .....	34
Safety notes .....	14	Putting on the wristband/clip.....	35
<b>Checking the wristband/ Product contents</b> .....	<b>18</b>	Activating the display module .....	36
<b>Functions</b> .....	<b>19</b>	Switching the display module off.....	36
Data storage .....	21	Setting the time and time mode .....	37
Modes .....	21	Downloading and installing the Crane	
Time mode .....	23	Connect app.....	37
Step counter mode .....	24	Connecting the wristband with the Crane	
Distance mode.....	25	Connect app.....	40

Using the wristband without the Crane Connect app.....	42
Activating sleep mode.....	43
Deactivating sleep mode.....	44
<b>Care and maintenance.....</b>	<b>45</b>
Cleaning the wristband.....	45
Storing the wristband.....	46
<b>Troubleshooting.....</b>	<b>47</b>
<b>Declaration of conformity.....</b>	<b>49</b>
<b>Technical data.....</b>	<b>50</b>
<b>Disposal.....</b>	<b>51</b>
Disposing of the packaging.....	51
Disposing of the wristband.....	51
<b>Warranty.....</b>	<b>53</b>
Warranty Card.....	53
Warranty conditions.....	55
<b>Customer Service.....</b>	<b>58</b>





## Scope of delivery/ device parts

- 1 Band, 2x
- 2 Display module, removable
- 3 Display (OLED display)
- 4 Menu button
- 5 Clip
- 6 USB charger

Great care has gone into the manufacture of this product and it should therefore provide you with years of good service when used properly. In the event of product failure within its intended use over the course of the first 3 years after date of purchase, we will remedy the problem as quickly as possible once it has been brought to our attention. In the unlikely event of such an occurrence, or if you require any information about the product, please contact us via our helpline support services, details of which are to be found both in this manual and on the product itself.

If you are not entirely satisfied with this product please return it to the store where it was purchased and we will be pleased to replace or refund it. This does not affect your statutory rights.



GB

IRE

**PRODUCED IN CHINA FOR:**

ALDI STORES LTD. PO BOX 26, ATHERSTONE  
WARWICKSHIRE, CV9 25H

ALDI STORES (IRELAND) LTD.  
PO BOX 726, NAAS, CO. KILDARE.

visit us at [www.aldi.co.uk](http://www.aldi.co.uk)

**AFTER SALES SUPPORT**



**00800/ 52323000** [service@produktservice.info](mailto:service@produktservice.info)



Model: **AE5-CDAT-2A/2B/2C/2D**

Product code: **92072**

04/2015

**3**  
**YEARS**  
**WARRANTY**